

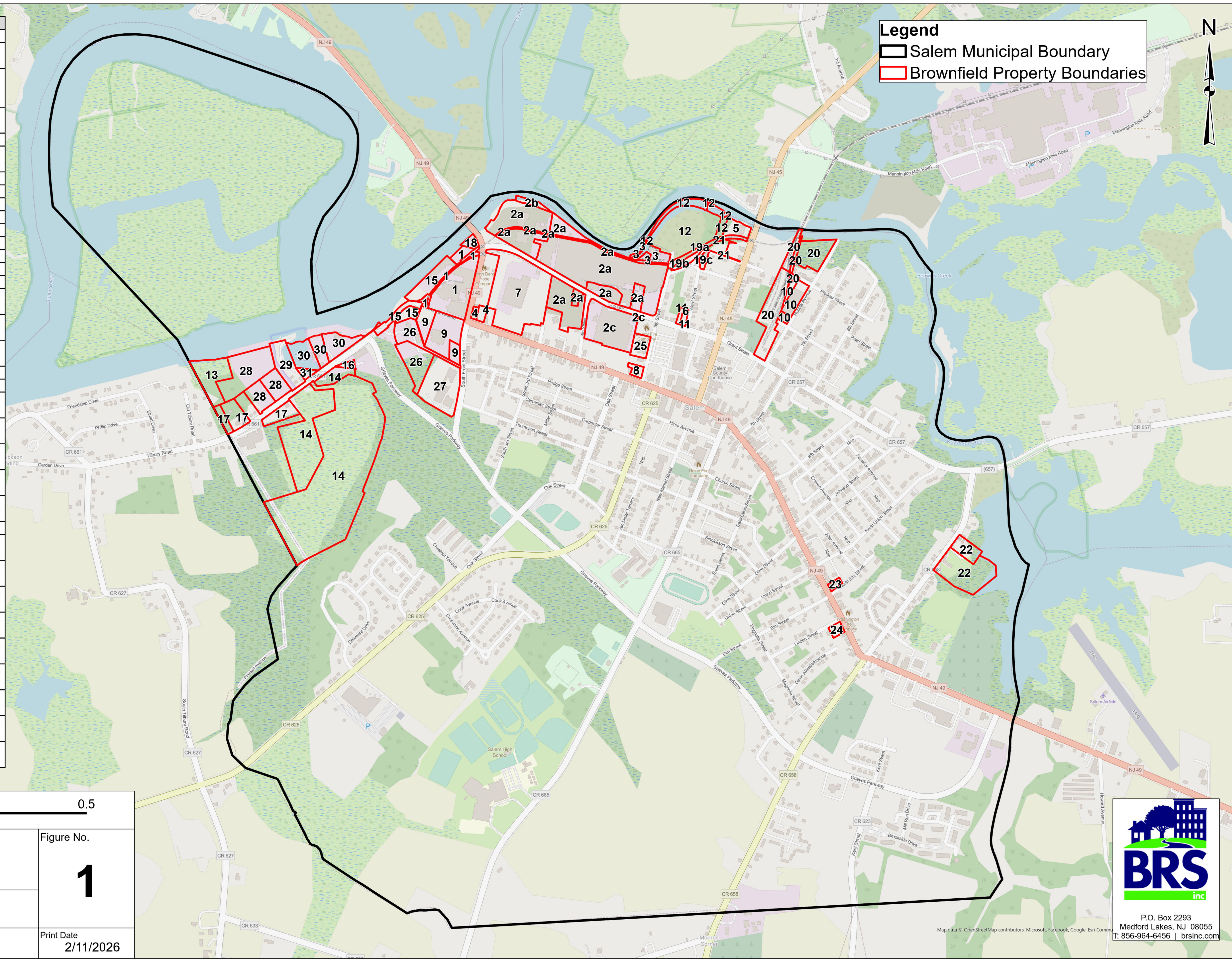
Site ID	Site Name	BDA
1	Aluchem Incorporated	In BDA
2a	Anchor Glass Container Corp	In BDA
2b	Anchor Glass Container Corp (Block 4; Lot 1.01)	In BDA
2c	Former Anchor Glass Container Corp	In BDA
3	Atlantic City Electric Co.	In BDA
4	Bader's Citgo Service Station	In BDA
5	Cooke Property	In BDA
6	Former Machine Shop	In BDA
7	Falcon Power	In BDA
8	Library Parking Lot	In BDA
9	GE Fabricators, Inc.	In BDA
10	Hubbell-Salem Inc.	In BDA
11	Mccarthy Property	In BDA
12	Ivy Point Property	In BDA
13	Powell Property	In BDA
14	Salem City Sanitary Landfill	In BDA
15	South Jersey Port Corp Lakeview Dr	In BDA
16	South Jersey Port Corp Grieves Pky	In BDA
17	Tilbury Rd Assoc Inc.	In BDA
18	Tri-County Oil Company	In BDA
19a	Redeveloped Intersection 4	In BDA
19b	Redeveloped Intersection 1	In BDA
19c	Redeveloped Intersection 3	In BDA
20	Vacant Land And Rail Line 1	In BDA
21	Vacant Land And Rail Line 3	In BDA
22	Ernie Davis Property	In BDA
23	Former Mechanic Shop (352-354 E Broadway)	Added to BDA (2024)
24	Former Sunoco	Added to BDA (2024)
25	Sunbeam Publishing	Added to BDA (2024)
26	Salem Water and Sewage	Added to BDA (2024)
27	Cooper Interconnect	Added to BDA (2024)
28	Shipping Container Storage	Added to BDA (2024)
29	Salem Boat Basin	Added to BDA (2024)
30	Mid Atlantic Shipping & Stevedoring Inc	Added to BDA (2024)
31	Marina	Added to BDA (2024)

**Legend**

- Salem Municipal Boundary
- Brownfield Property Boundaries



Scale 1:6,000	0    0.13    0.25    0.5 Miles
Figure Title <b>Salem 2026 BDA Map</b>	Figure No. <b>1</b>
Client <b>City of Salem</b>	
Address <b>Salem, New Jersey</b>	Print Date <b>2/11/2026</b>



**BRS**  
inc

P.O. Box 2293  
Medford Lakes, NJ 08055  
T: 856-964-6456 | brsinc.com